

# ELLA



◆ **MASTERCRAFT.** ◆  
BUILDER GROUP





ELLA COASTAL



ELLA CRAFTSMAN



ELLA FARMHOUSE

# ELLA COASTAL

## MAIN FLOOR PLAN



**3 - 6 BEDROOMS**

**2 - 5 BATHROOMS**

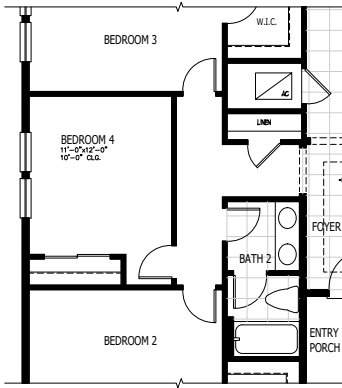
**3 CAR GARAGE**

**3,164 - 4,119 SQUARE FEET**

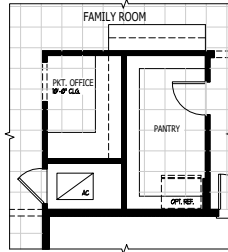
In the interest of continuous product improvements and to meet changing market conditions, MasterCraft Builder Group reserves the right to modify floor plans, exterior elevations, specifications, features, prices and product types without prior notice or obligation. Some features may vary from plan to plan. All plans, elevation renderings, and artist's conceptions are not necessarily to scale. All square footages are approximate. Window size, type and location may vary with each elevation. 06/23/2023

# ELLA FLOOR PLAN OPTIONS

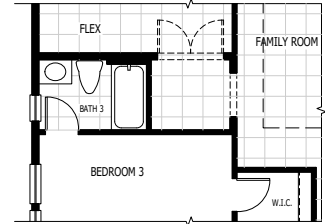
**1** BEDROOM 4



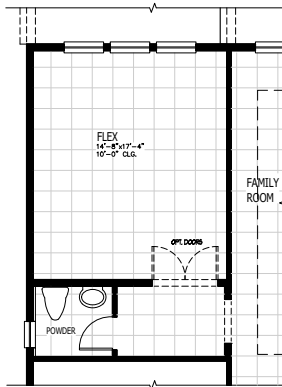
**2** POCKET OFFICE



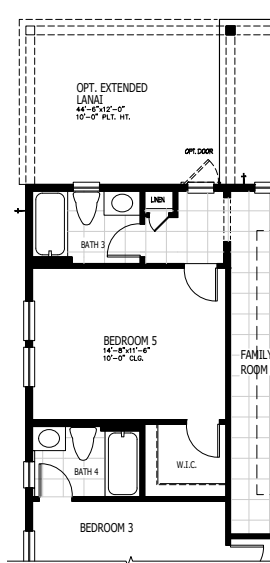
**3** BATHROOM 3



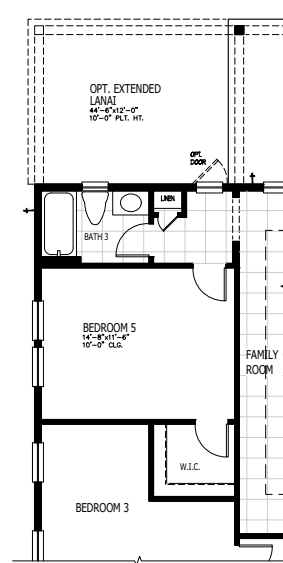
**3** POWDER BATHROOM



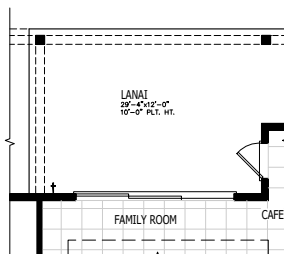
**4** BEDROOM 5 & BATHROOM 3 & 4



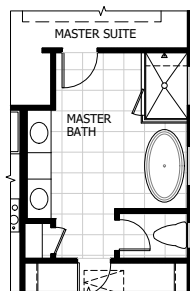
**4** BEDROOM 5 & BATHROOM 3



**5** LANAI SLIDING DOOR

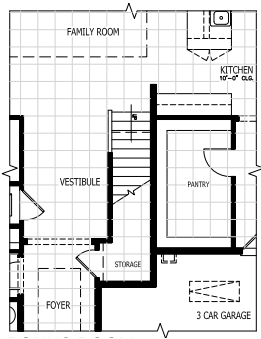


**6** FREESTANDING TUB

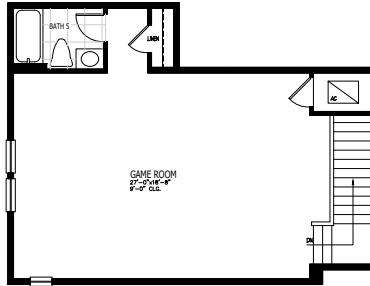


# ELLA BONUS & OTHER ELEVATIONS

## 7 BONUS ROOM STAIRS

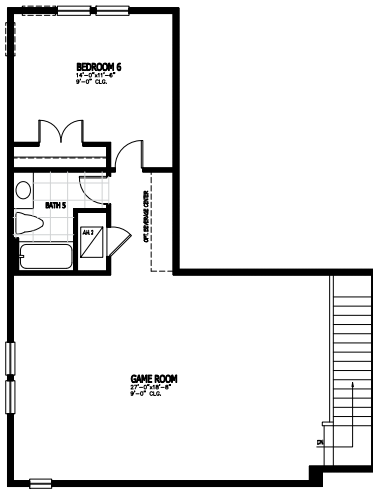


## 7 SECOND FLOOR BONUS ROOM

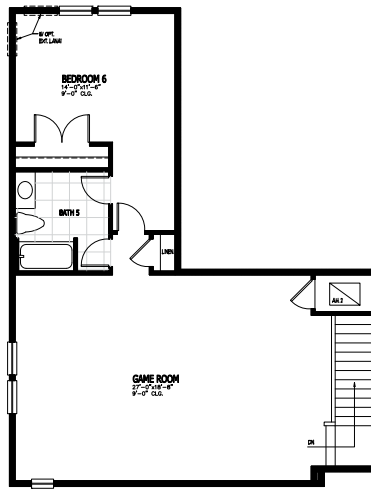


ADDS 678 SQUARE FEET

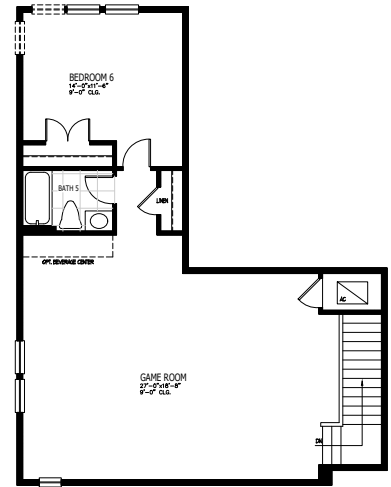
## 7 BONUS ROOM & BEDROOM 6 OPT 1



## 7 BONUS ROOM & BEDROOM 6 OPT 2

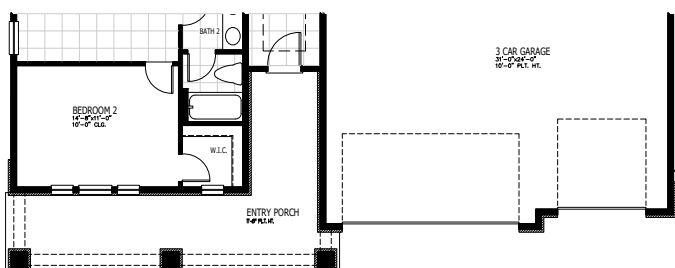


## 7 BONUS ROOM & BEDROOM 6 OPT 3

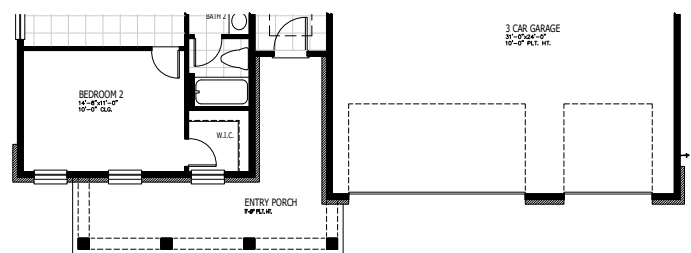


ADDS 955 SQUARE FEET

## E CRAFTSMAN



## E FARMHOUSE



◆ **MASTERCRAFT** ◆  
BUILDER GROUP