

# CARSON



◆ MASTERCRAFT ◆  
BUILDER GROUP



CARSON COASTAL



CARSON CRAFTSMAN

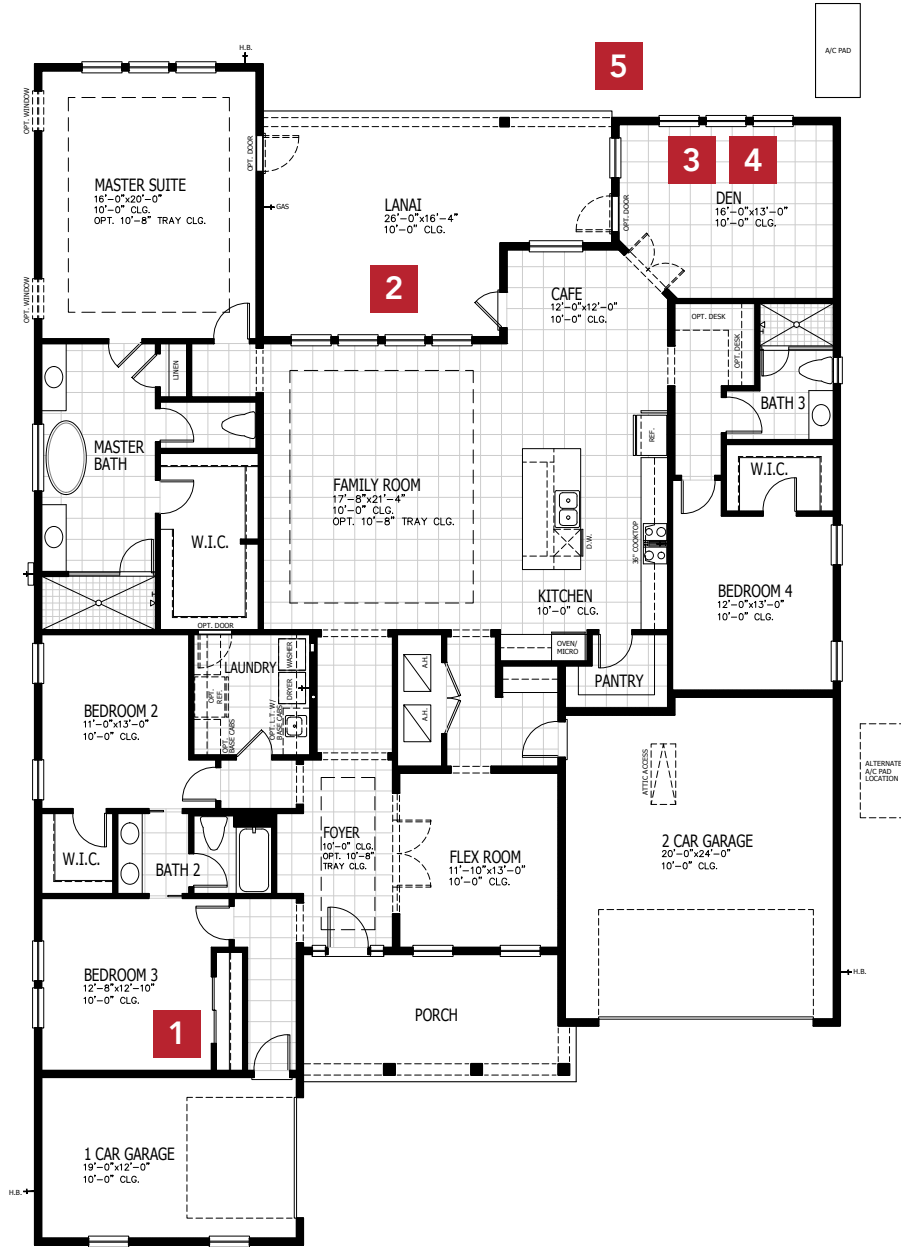


CARSON FARMHOUSE



# CARSON COASTAL

## FIRST FLOOR



**4-5 BEDROOMS**

**3 BATHROOMS**

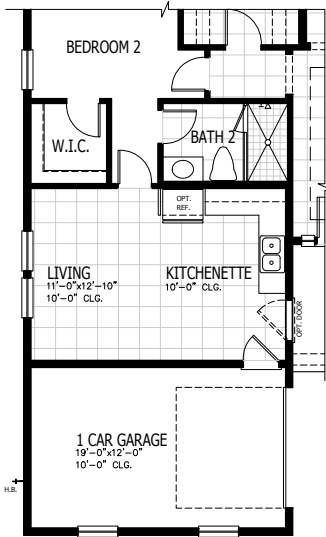
**3 CAR GARAGE**

**3243-3311 SQUARE FEET**

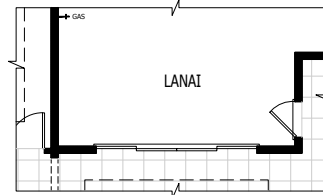
In the interest of continuous product improvements and to meet changing market conditions, MasterCraft Builder Group reserves the right to modify floor plans, exterior elevations, specifications, features, prices and product types without prior notice or obligation. Some features may vary from plan to plan. All plans, elevation renderings, and artist's conceptions are not necessarily to scale. All square footages are approximate. Window size, type and location may vary with each elevation. 06/01/2022

# CARSON FLOOR PLAN OPTIONS

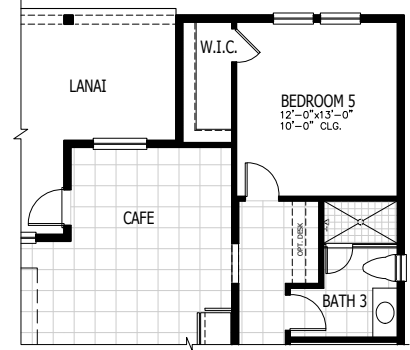
## 1 MULTI-GENERATIONAL SUITE



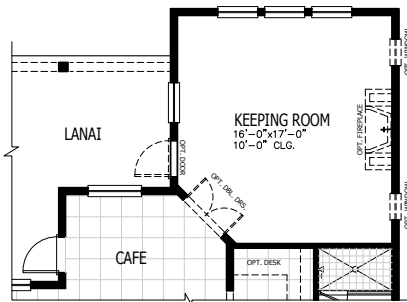
## 2 SLIDING GLASS DOOR



## 3 BEDROOM 5

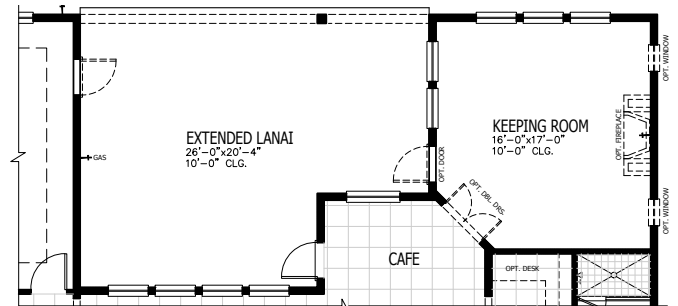


## 4 KEEPING ROOM



ADDS 68 SQUARE FEET

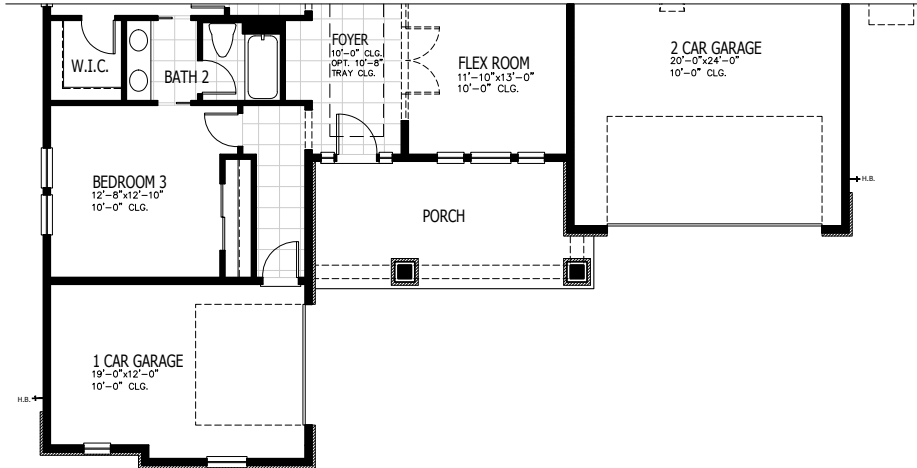
## 5 KEEPING ROOM WITH EXTENDED LANAI



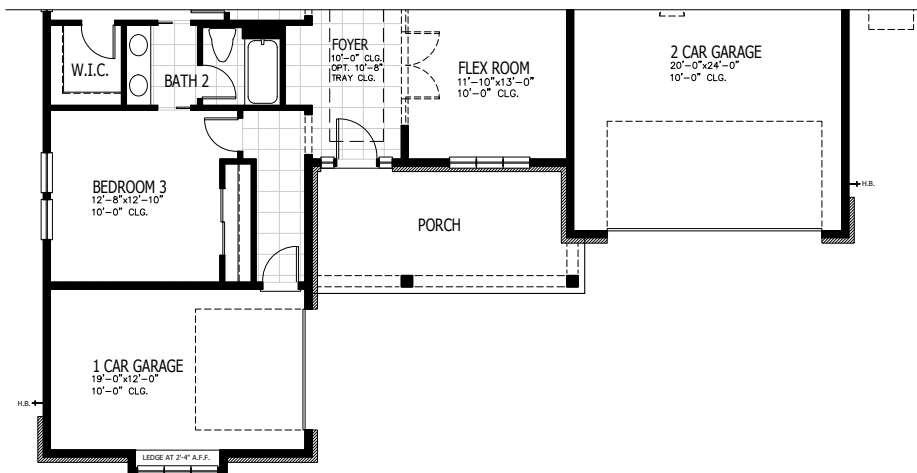
ADDS 68 SQUARE FEET

# CARSON OTHER ELEVATIONS

## E CRAFTSMAN



## E FARMHOUSE



◆ **MASTERCRAFT** ◆  
BUILDER GROUP