

# LOLA



◆ **MASTERCRAFT** ◆  
BUILDER GROUP



LOLA COASTAL

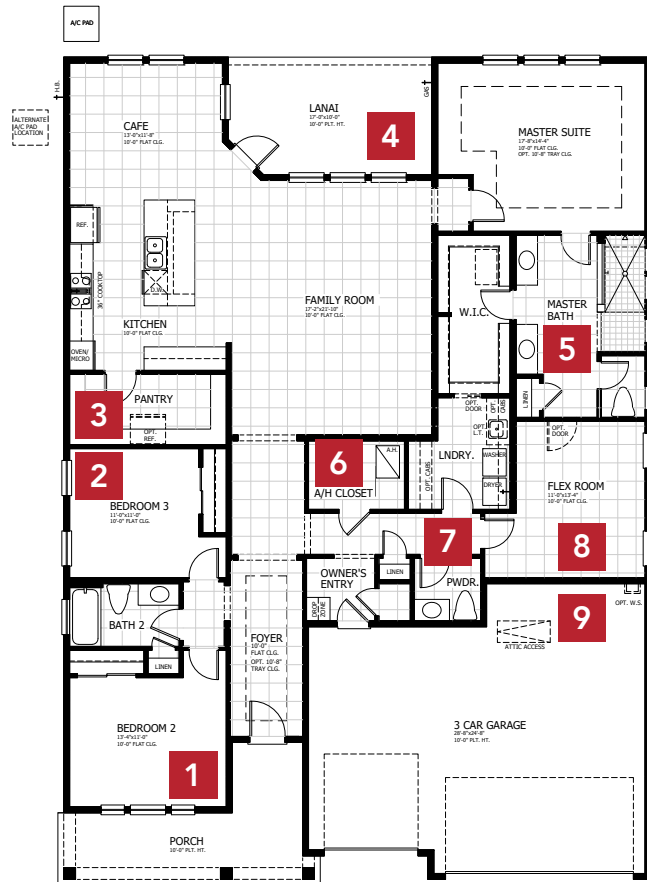


LOLA CRAFTSMAN



LOLA FARMHOUSE

# LOLA COASTAL



**3-5 BEDROOMS**

**2.5-4 BATHROOMS**

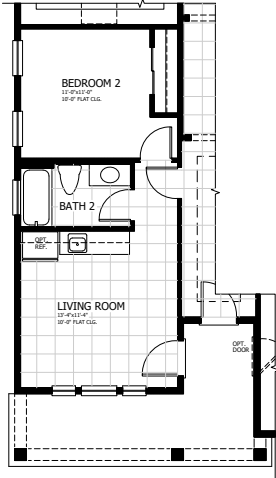
**3 CAR GARAGE**

**2,496-3,251 SQUARE FEET**

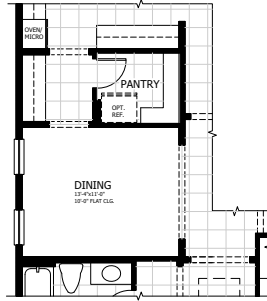
In the interest of continuous product improvements and to meet changing market conditions, MasterCraft Builder Group reserves the right to modify floor plans, exterior elevations, specifications, features, prices and product types without prior notice or obligation. Some features may vary from plan to plan. All plans, elevation renderings, and artist's conceptions are not necessarily to scale. All square footages are approximate. Window size, type and location may vary with each elevation. 01/30/2024

# LOLA FLOOR PLAN OPTIONS

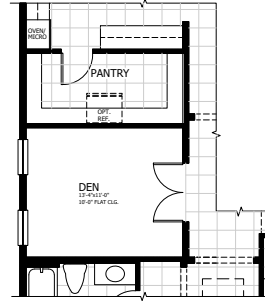
**1** GUEST SUITE



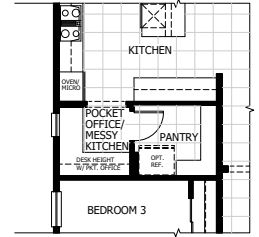
**2** DINING ROOM



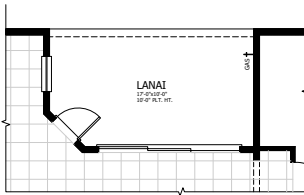
**2** DEN



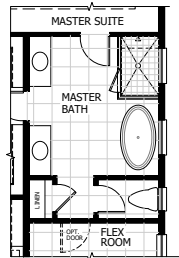
**3** MESSY KITCHEN



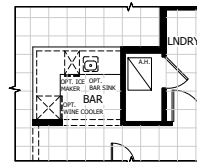
**4** SLIDING GLASS DOOR AT LANAI



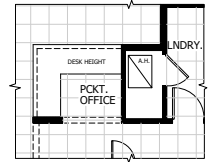
**5** FREESTANDING TUB



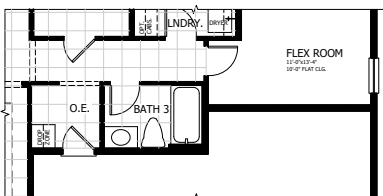
**6** BAR



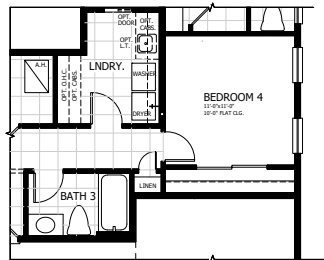
**6** POCKET OFFICE



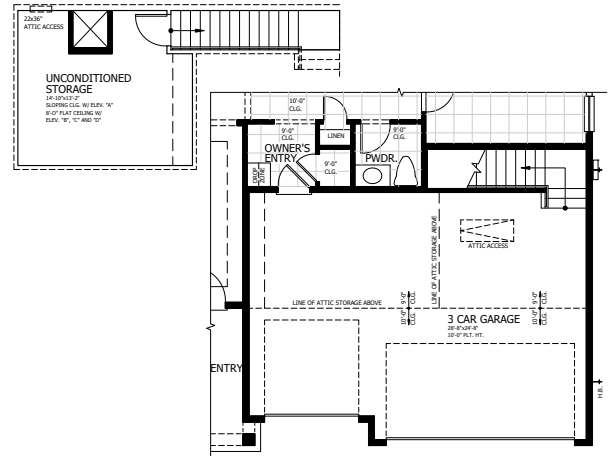
**7** BATHROOM 3



**8** BATHROOM 3 & BEDROOM 4

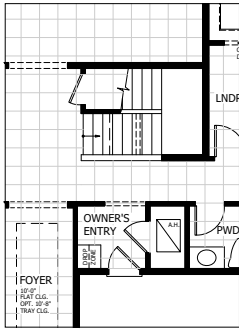


**9** ATTIC STORAGE WITH STAIRS

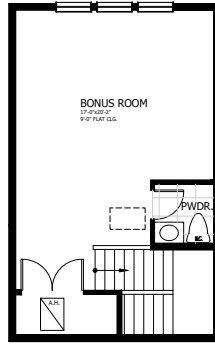


# LOLA BONUS & OTHER ELEVATIONS

## 6 BONUS ROOM STAIRS

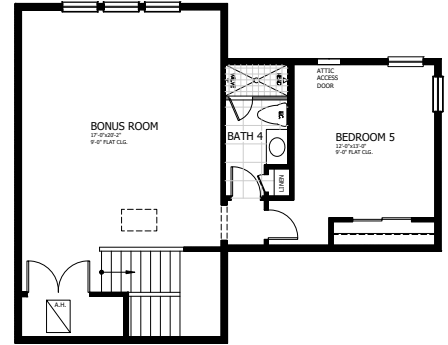


## 6 SECOND FLOOR BONUS ROOM



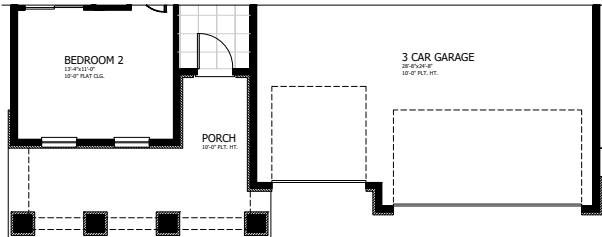
ADDS 445 SQUARE FEET

## 6 BEDROOM 5 AND BONUS ROOM

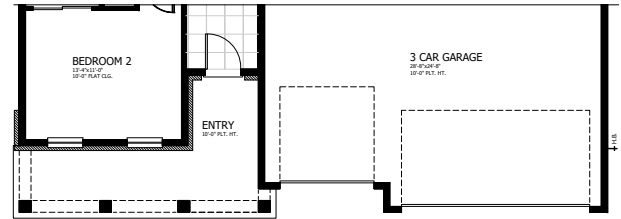


ADDS 742 SQUARE FEET

## E CRAFTSMAN



## E FARMHOUSE



◆ **MASTERCRAFT** ◆  
BUILDER GROUP